

PHIPPS GARDEN CENTER AT MELLON PARK

June 29, 2023



Rothschild
COLLABORATIVE
Doyno

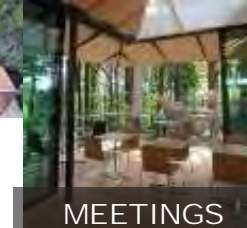
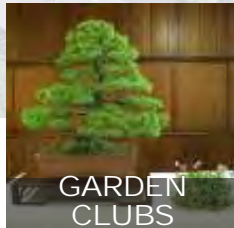
PHIPPS GARDEN CENTER

Garden Center Community Partnerships

The Garden Center space actively supports numerous organizations and nonprofits by providing facilities for regular meetings, conferences, and exhibitions. The new space will continue to support these relationships and Phipps hopes to expand the offerings and opportunities with our partners.

Ongoing Activities

- Pittsburgh Bonsai Society meetings and exhibitions
- Orchid Society of Western PA meetings and exhibitions
- Three Rivers Birding Society
- Western PA Herb Society
- Greater Pittsburgh Aquarium Society
- Hosta and Daylily Society
- Executive Committee of the Garden Club of Allegheny County
- Native Plant and Sustainability Conference
- Summer Short Course
- Three Rivers Urban Soils Symposium
- Sustainable Landcare Accreditation Training

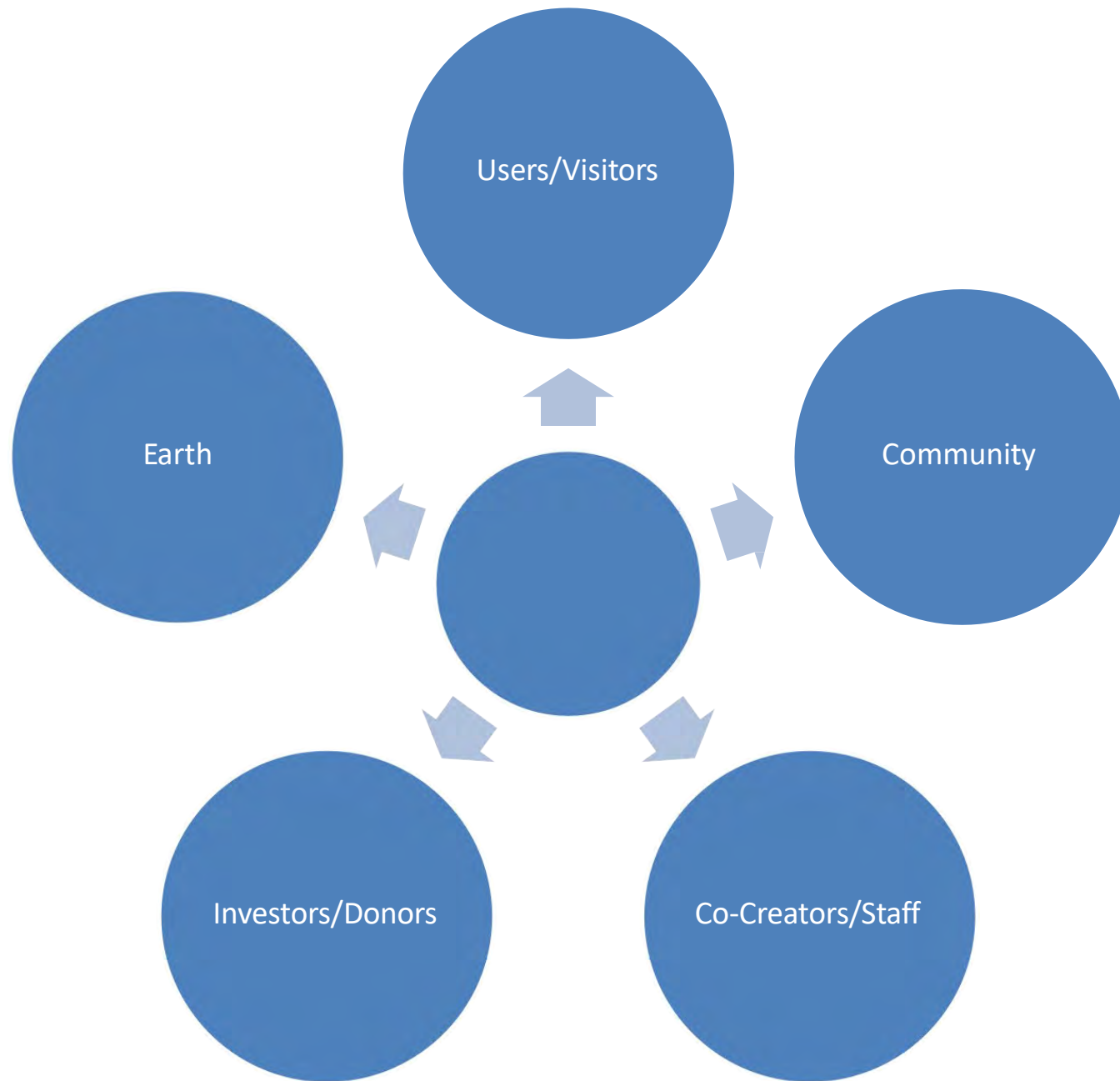


PROJECT PURPOSE

To transform Phipps Garden Center into a living educational community asset that expresses the essence of this unique place,

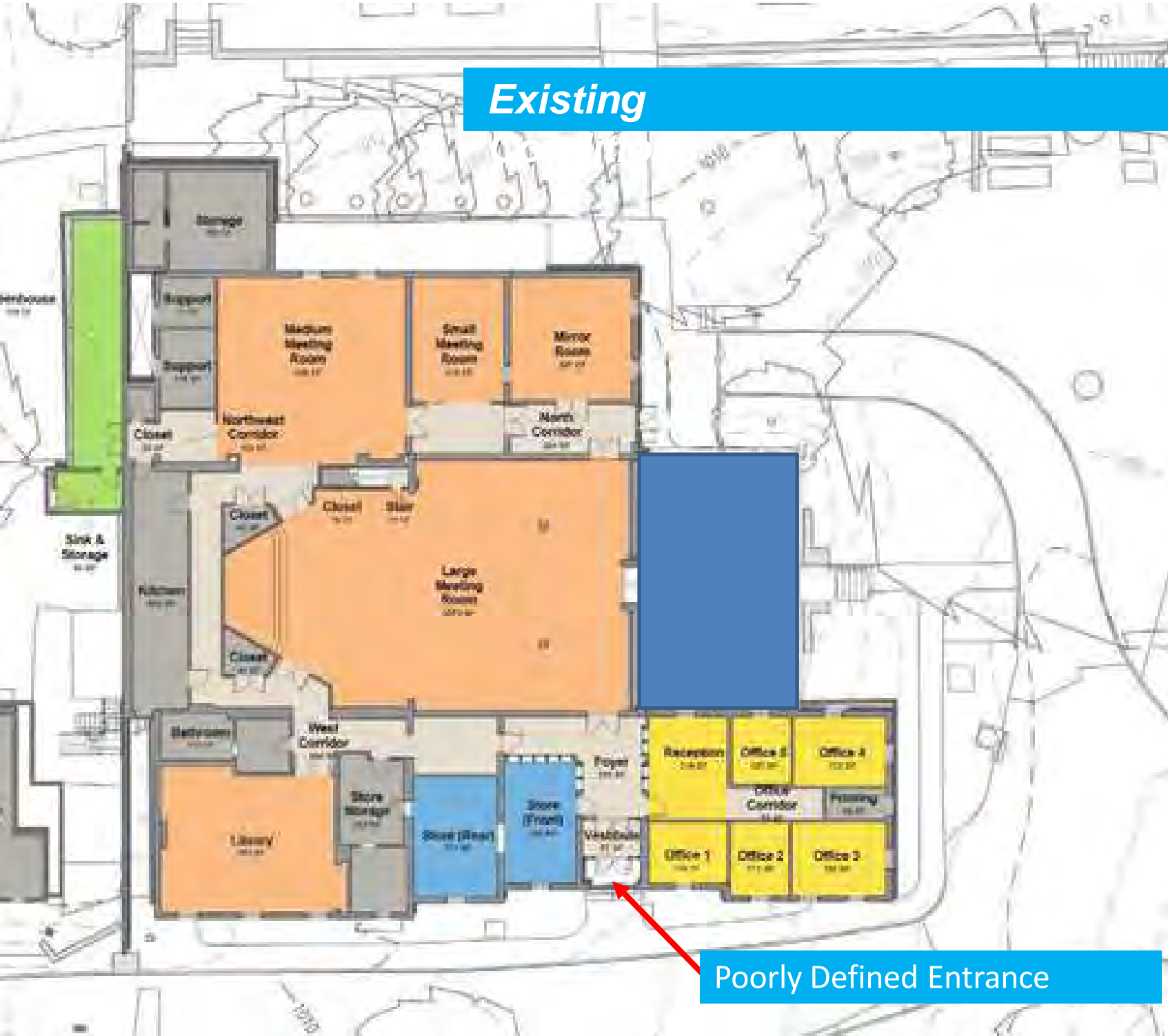
In a way that engages stakeholders in a transparent co-creative process of awakening our essential interrelationships with all living systems,

So that Phipps evolves the capacity of individuals and the community to see their regenerative role in growing the health and vitality of Pittsburgh's ecosystem (life shed) indefinitely.



Throughout this process, Phipps is taking a regenerative approach with the goal that we add equal value to all five of our stakeholder groups.

The existing conditions include a poorly defined and inaccessible entrance, restrooms that are not accessible, inadequate classroom space, poor circulation and a building in significant need of a renovation.



Existing

Poorly Defined Entrance

EXISTING SERVICE YARD



08-26-19 © RothschildDoyno Collaborative

A service yard is the main feature visitors see when they approach the park from the parking area.

EXISTING GARDEN CENTER

08-26-19 © Rothschild Doyno Collaborative



In a primary area between the building and the rest of the park, a loading dock is the main feature between the east side of the building and the main lawn.

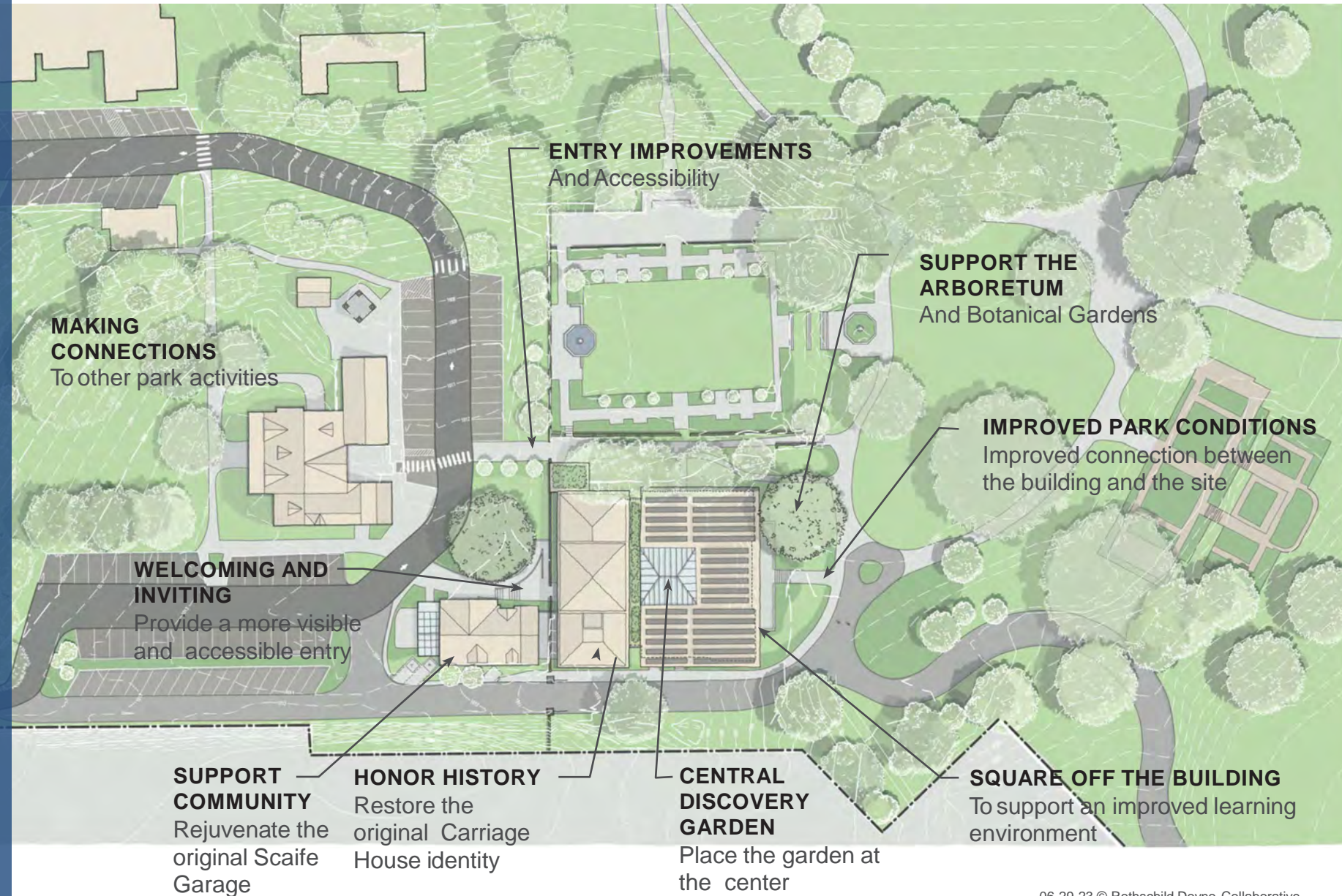
MASTER PLAN - "WHERE WE ARE"



Anticipating Future Mellon Park Masterplan Improvements

The Mellon Park Master Plan was released in the summer of 2022. This plan provides us with a good road map to look at how the renovation of the Garden Center can work with the other elements and goals of the park. Some of the key elements we identified are:

- Honor the history of the original carriage house and the park
- Create gardens and green spaces that support the existing plant collections within the park
- Create a new entrance from the main parking area to the Garden Center
- Renovate the Scaife Garage
- Square off the building to remain within our existing boundaries
- Improve accessibility into the park
- Improve connections between the building and the rest of the park
- Add a central courtyard garden within the building to enhance the biophilic nature of the building

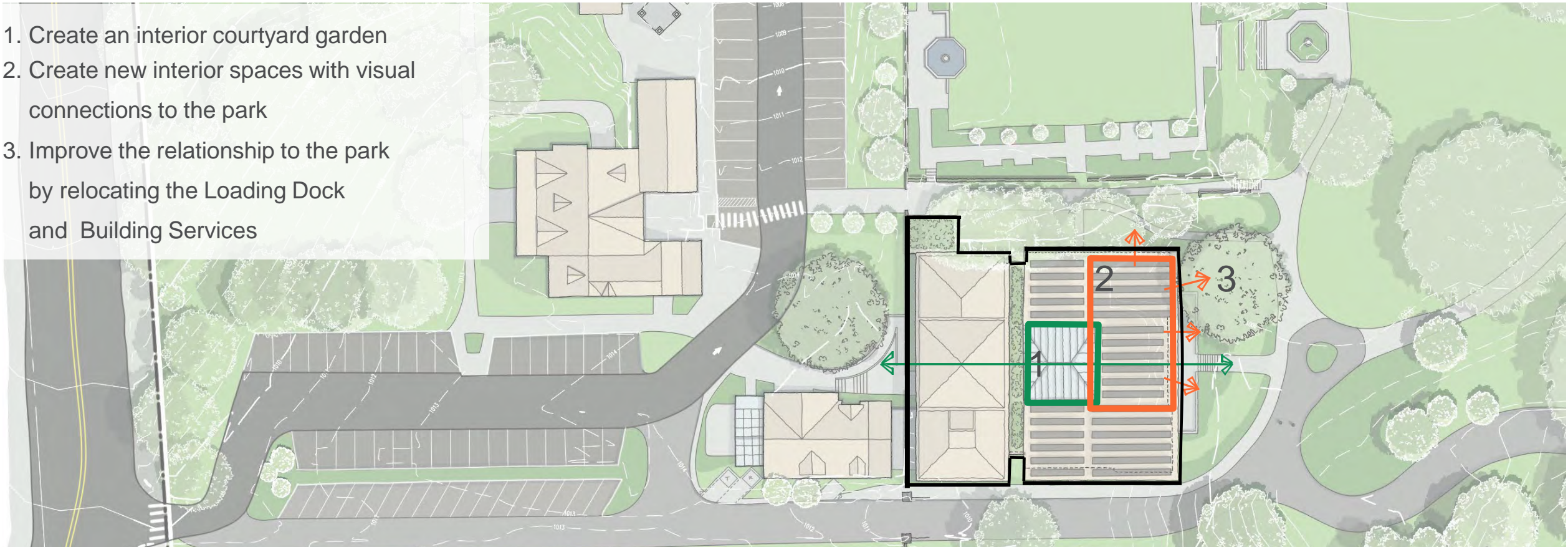


GARDEN AT THE CENTER



Moving the Garden to the center of the building provides light and vegetation for users year-round

1. Create an interior courtyard garden
2. Create new interior spaces with visual connections to the park
3. Improve the relationship to the park by relocating the Loading Dock and Building Services



Squaring off the building will allow us to meet programmatic needs and provide for better access to the park without infringing on green space. A central and defining feature will be a garden in the center which will be under a glass roof, making this a welcoming site throughout all four seasons.

INSPIRING THROUGH NATURE

Creating Harmony with the Natural and Built Environment



Isabella Stewart Gardner Museum



Palm Court Phipps Conservatory

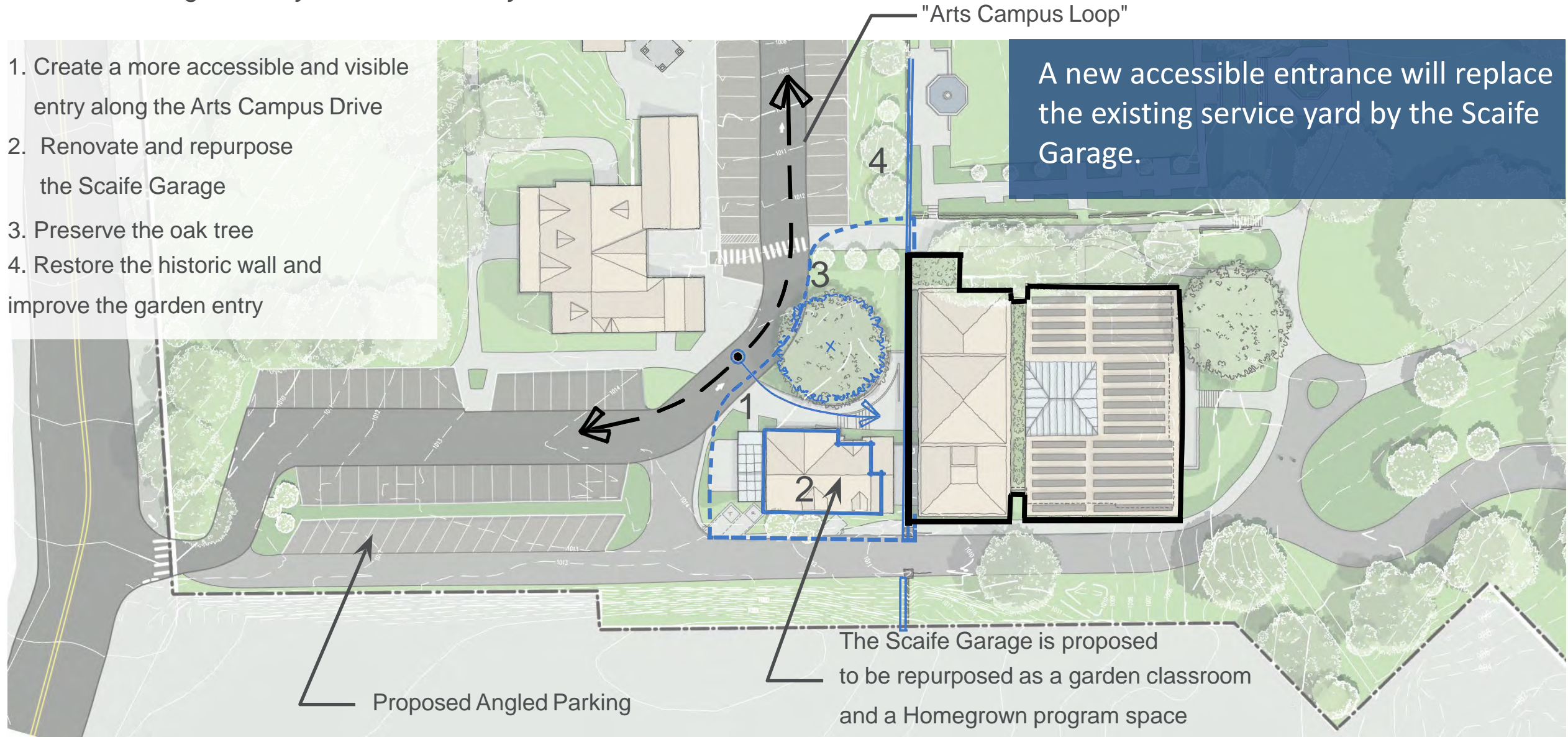
06-29-23 © Rothschild Doyno Collaborative

The central courtyard garden will become a prominent feature of the garden. It is inspired by the Isabella Stewart Gardner Museum in Boston (although it will not be as big or as tall as this example) and by our own work at the Conservatory.

A WELCOMING ENTRY

Shifting the entry for better visibility and access

1. Create a more accessible and visible entry along the Arts Campus Drive
2. Renovate and repurpose the Scaife Garage
3. Preserve the oak tree
4. Restore the historic wall and improve the garden entry

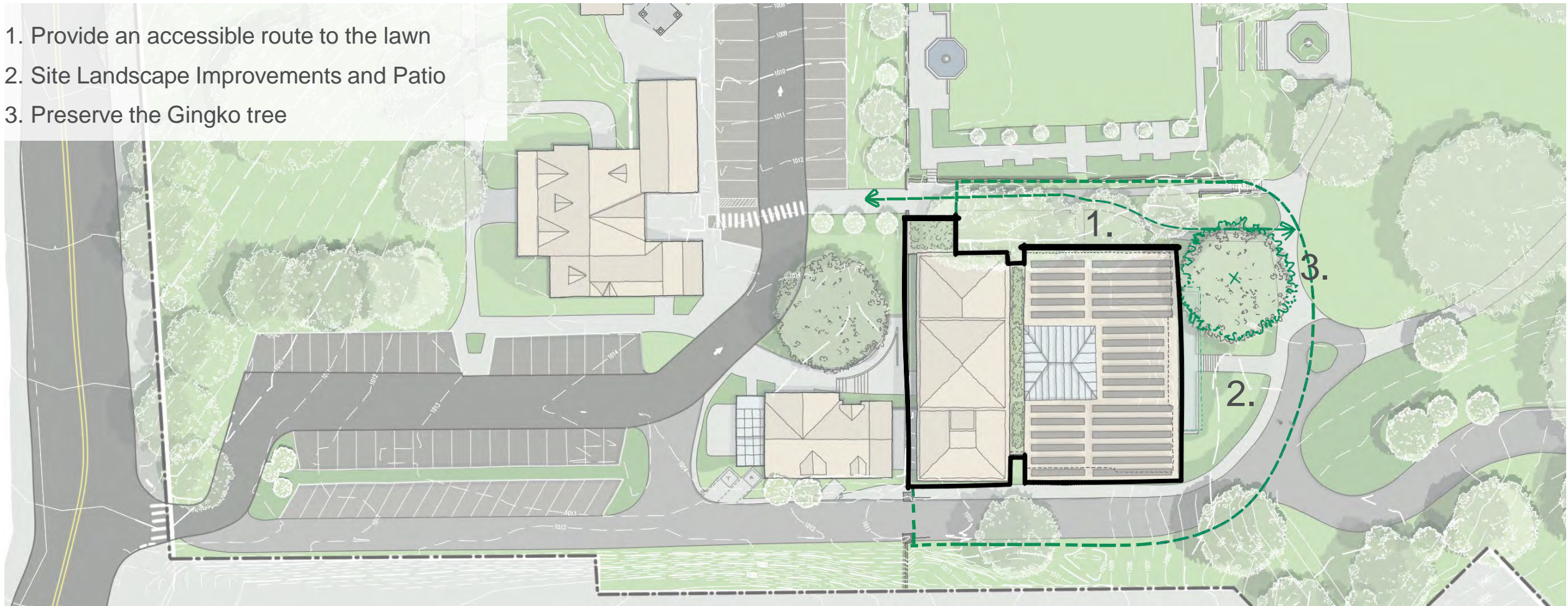


FROM THE BUILDING TO THE PARK

Transitioning from Garden Center Renovations to Mellon Park Improvements



1. Provide an accessible route to the lawn
2. Site Landscape Improvements and Patio
3. Preserve the Ginkgo tree



Enhancements will make an improved and accessible route for visitors into the park and to the walled garden.

HONOR SITE HISTORY

1904 Alden & Harlow. Renovated 1927 as a gift from R.B. Mellon to Sarah Mellon Scaife, Alden & Harlow. (1)

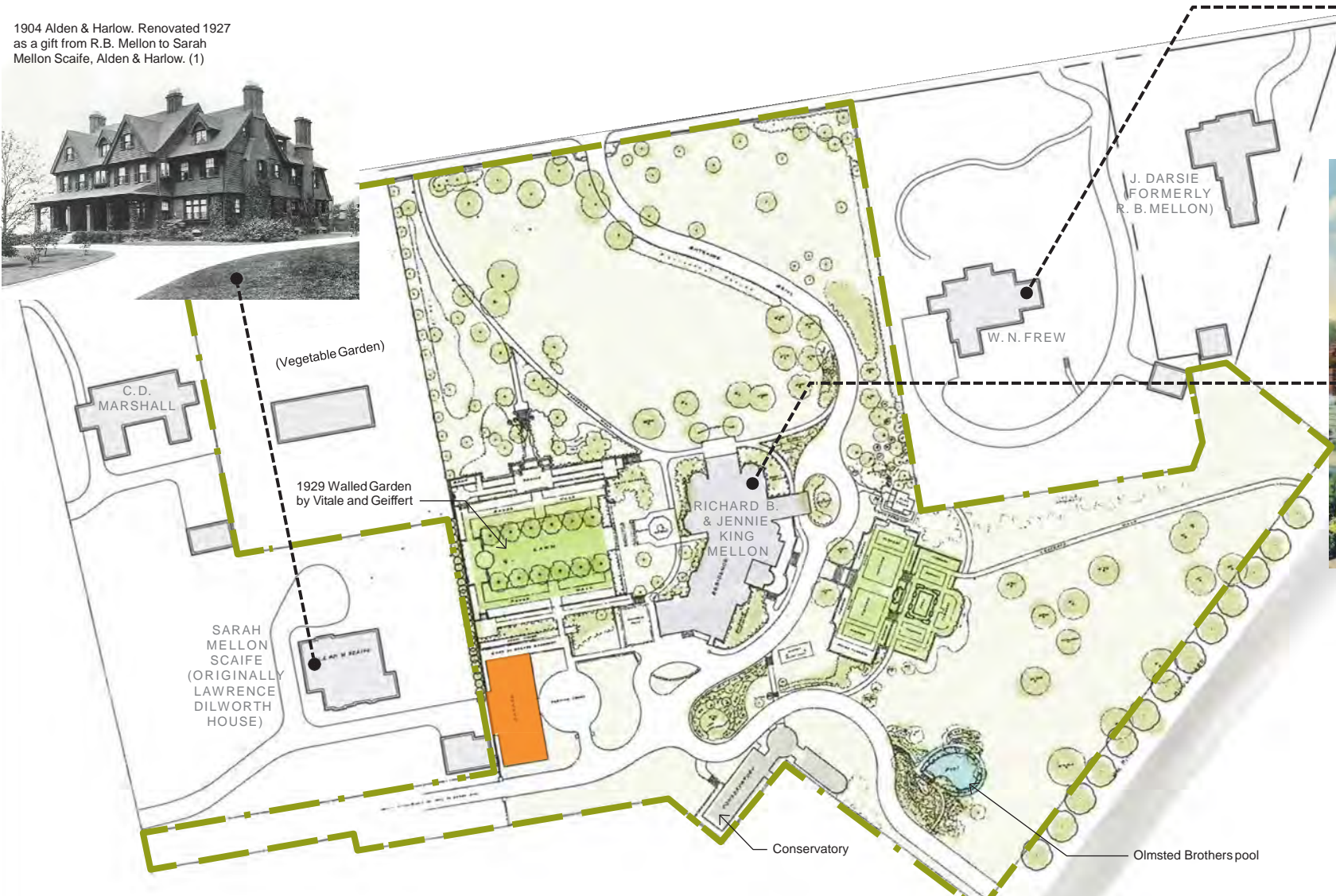


1902 Alden & Harlow (2)



R. B. Mellon Residence, 6500 Fifth Ave., Pittsburgh, Pa.

1912 Alden & Harlow (3)



(4)

Plan underlay by LANDSCAPES, from "Mellon Park Preservation & Management Plan", 2001. Based on Olmsted Brothers plan, 1931, and 1937 aerial photograph.

1. From *Architecture After Richardson* by Margaret Henderson Floyd, 1994 (p.302). Photo originally from *The Pittsburgh Builder*, 1907, courtesy of The Carnegie Pittsburgh.
2. *The Pittsburgh Builder*, 1907, courtesy of The Carnegie Pittsburgh.
3. <http://www.pittsburghmagazine.com/Best-of-the-Burgh-Blogs/Pitt-Girl/February-2012/What-the-Frick-Mellon/>
4. Plaque at the historic gate of the Garden Center.

To honor the history of the site we need to look back on how some of the existing structures came into being when they were part of the RK Mellon estate.

PHIPPS GARDEN CENTER AT MELLON PARK

HISTORIC MELLON CARRIAGE HOUSE

Uncovering the original Carriage House Facade

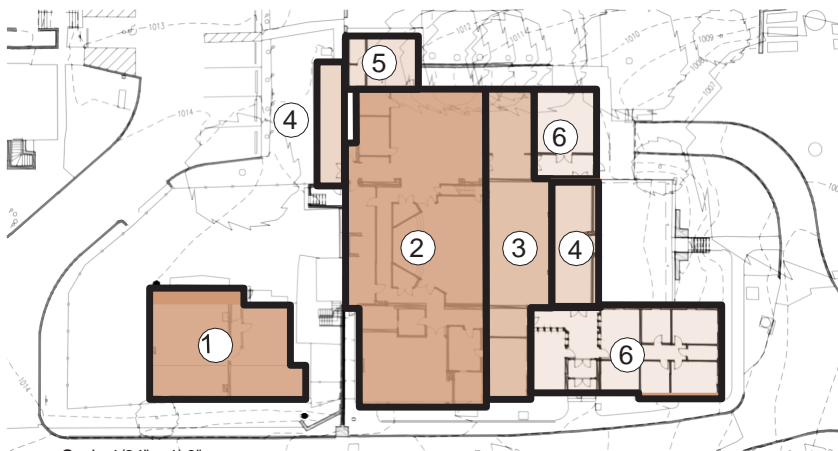
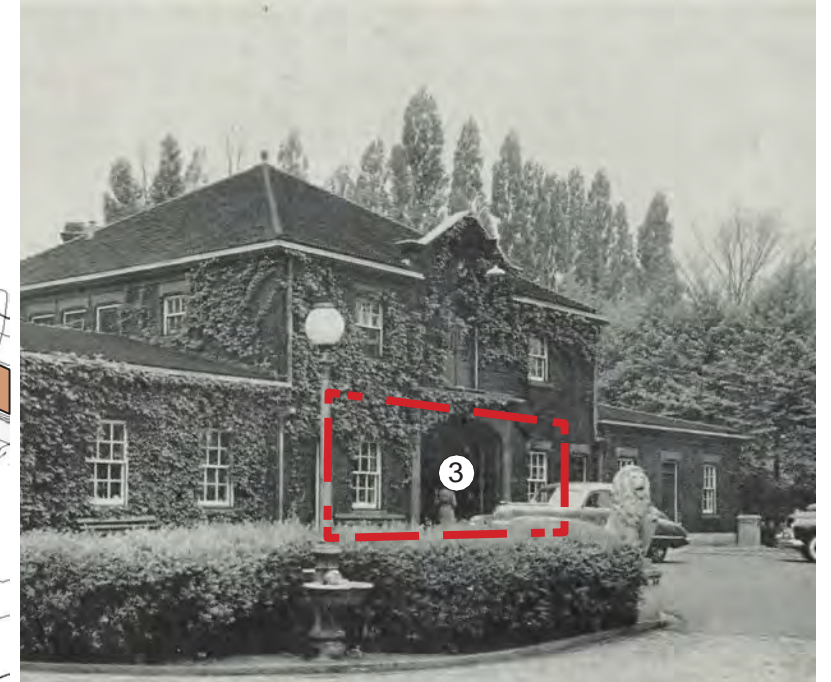
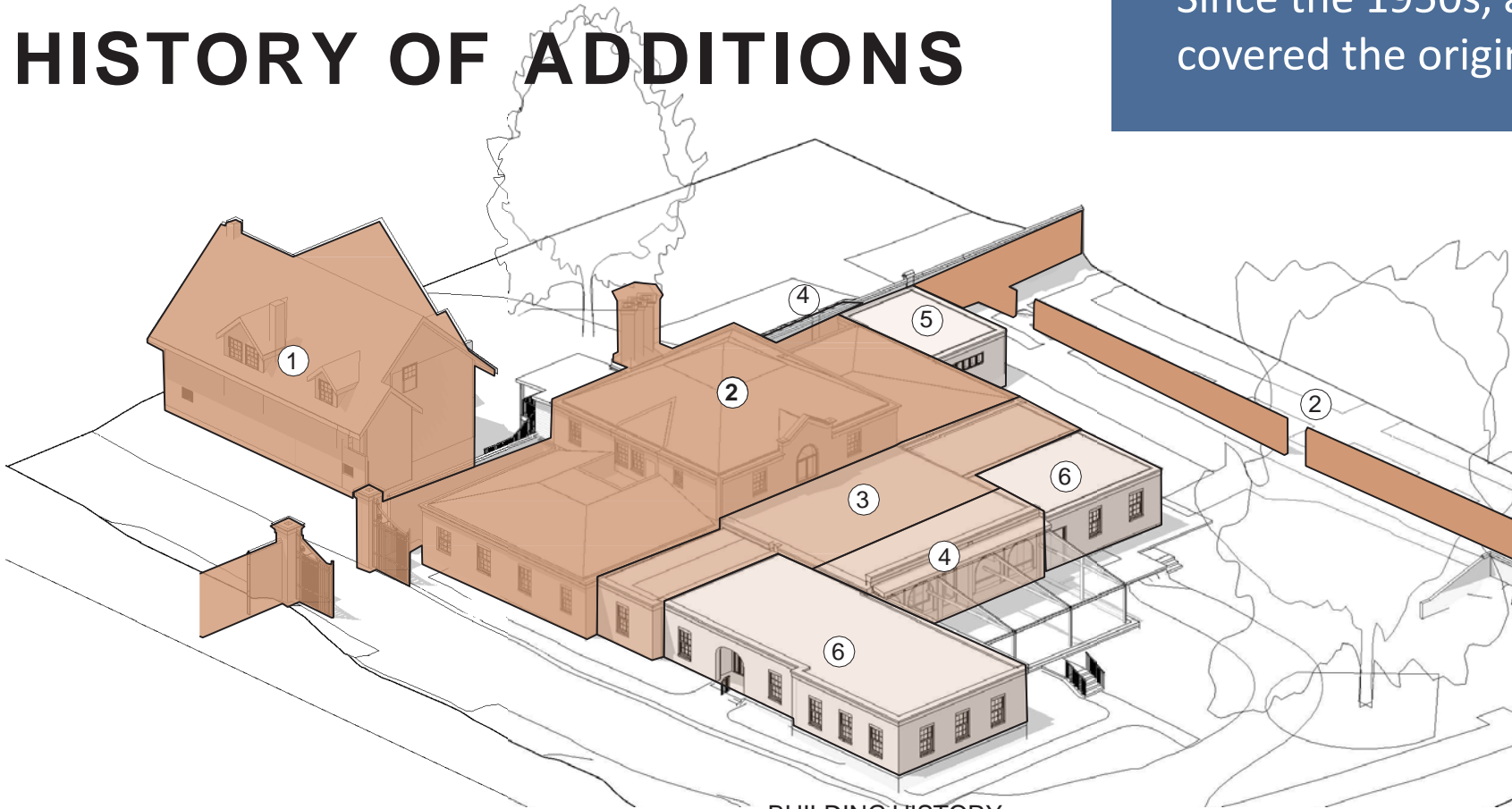


The Carriage House, the primary structure of the Garden Center, is the only remaining building from the RK Mellon estate.

06-29-23 © Rothschild Doyno Collaborative

HISTORY OF ADDITIONS

Since the 1950s, a series of additions covered the original carriage house.



BUILDING HISTORY:

- ① **1908** Dilworth House built—later the Scaife estate (Alden & Harlow)

- ② **1912** Mellon mansion & carriage house built (Alden & Harlow)

- 1948** The Pittsburgh Garden Center moves to Mellon Park and renovates the Mellon carriage house

- ③ **1955** Addition (Charles M. & Edward Stotz, Jr.)

- ④ **1958** Addition (Howard, Burt & Hill)

- ⑤ **1965** Addition (Howard, Burt & Hill)

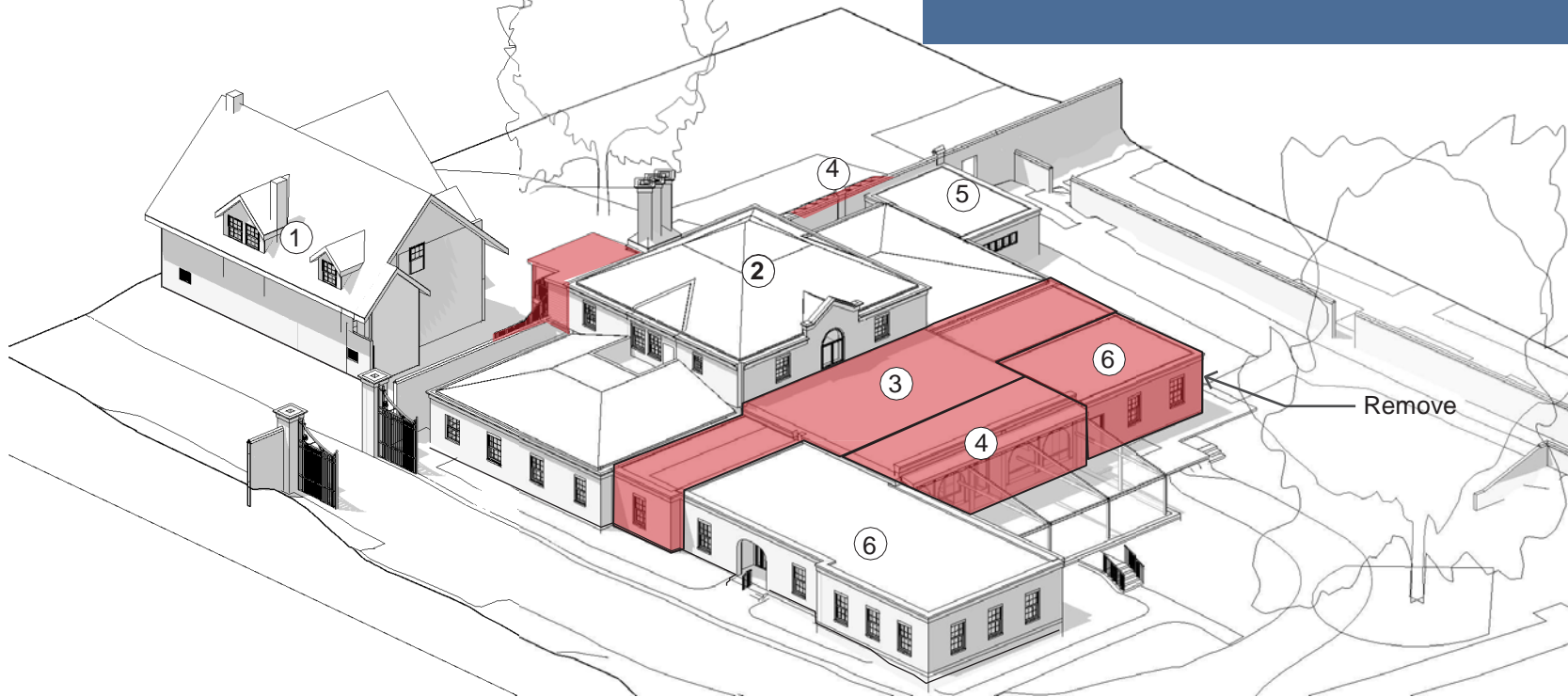
- ⑥ **1983** Addition



Scale 1/64" = 1'-0"
 0' 16' 32' 64' 128'

UNCOVER HISTORY

We have identified some areas that could be removed to help uncover and celebrate the unique beauty of the carriage house.



BUILDING HISTORY:

- ① **1908** Dilworth House built—later the Scaife estate (Alden & Harlow)
- ② **1912** Mellon mansion & carriage house built (Alden & Harlow)
- ③ **1948** The Pittsburgh Garden Center moves to Mellon Park and renovates the Mellon carriage house
- ④ **1955** Addition (Charles M. & Edward Stotz, Jr.)
- ⑤ **1958** Addition (Howard, Burt & Hill)
- ⑥ **1965** Addition (Howard, Burt & Hill)
- ⑦ **1983** Addition



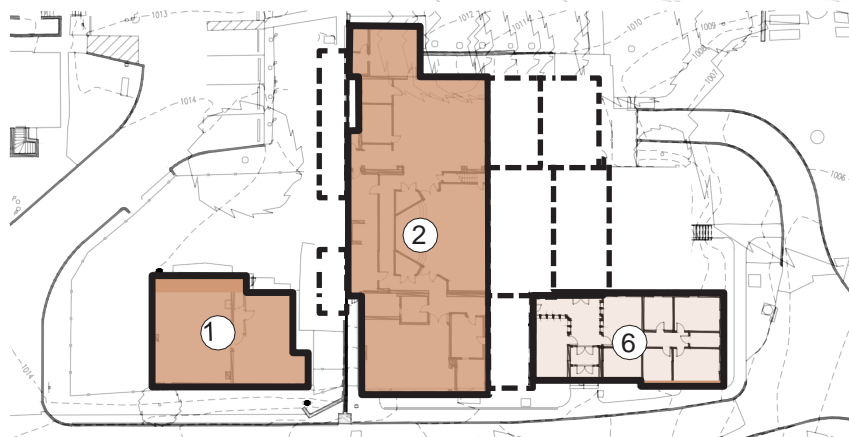
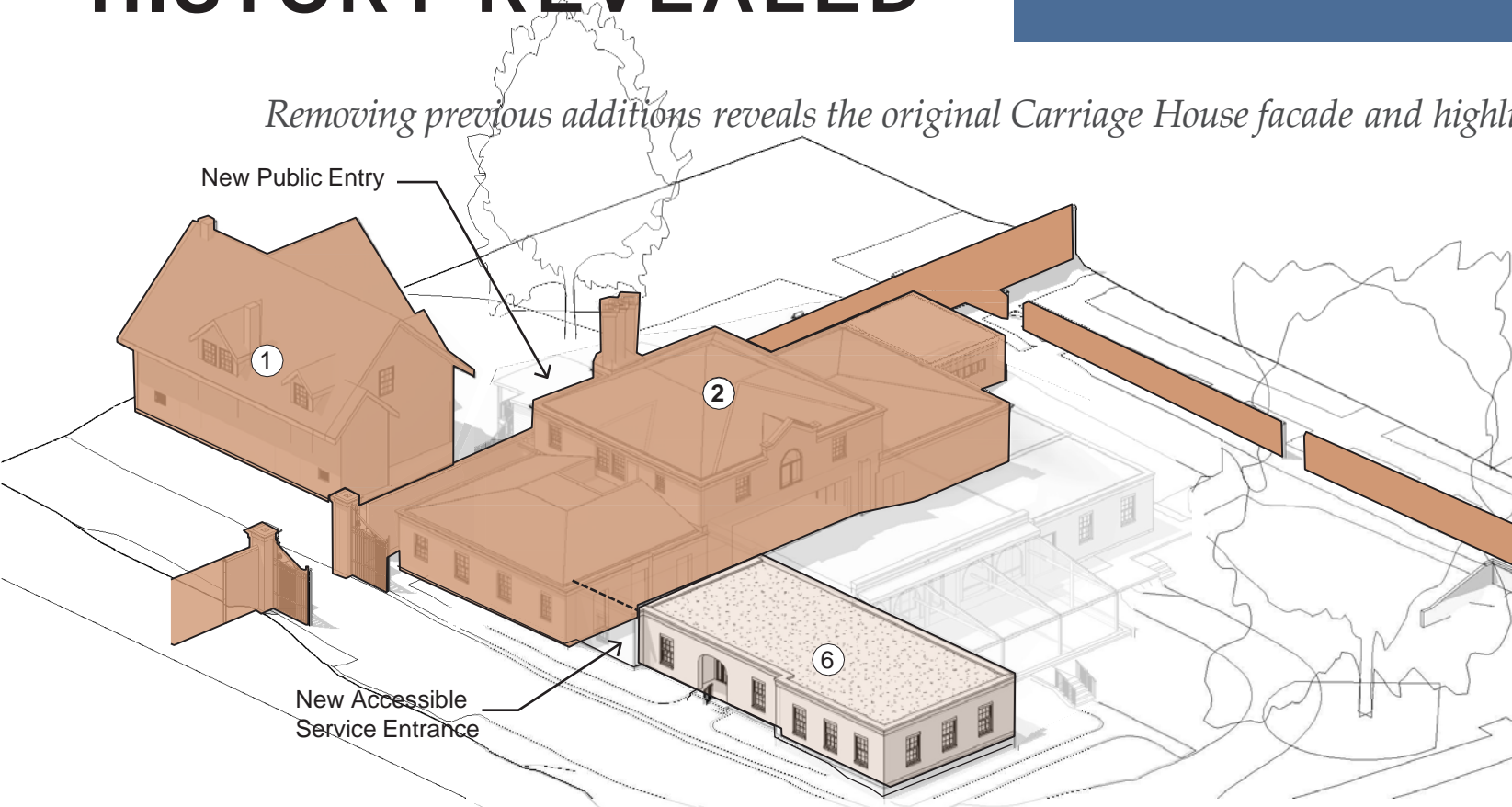
Scale 1/64" = 1'-0"
 0' 16' 32' 64' 128'

HISTORY REVEALED

Removing some of the more recent additions allows us to uncover the front of the Carriage House.



Removing previous additions reveals the original Carriage House facade and highlights three distinct pieces of the building.

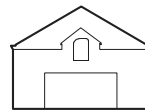


Scale 1/64" = 1'-0"
0' 16' 32' 64' 128'
06-29-23 © Rothschild Doyno Collaborative

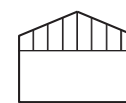
SCAIFE
GARAGE
building



MELLON
CARRIAGE HOUSE



PHIPPS
GARDEN CENTER



GREENERY

GREENERY



MAKING CONNECTIONS

A restored sense of place that builds relationships between the natural setting and the built environment

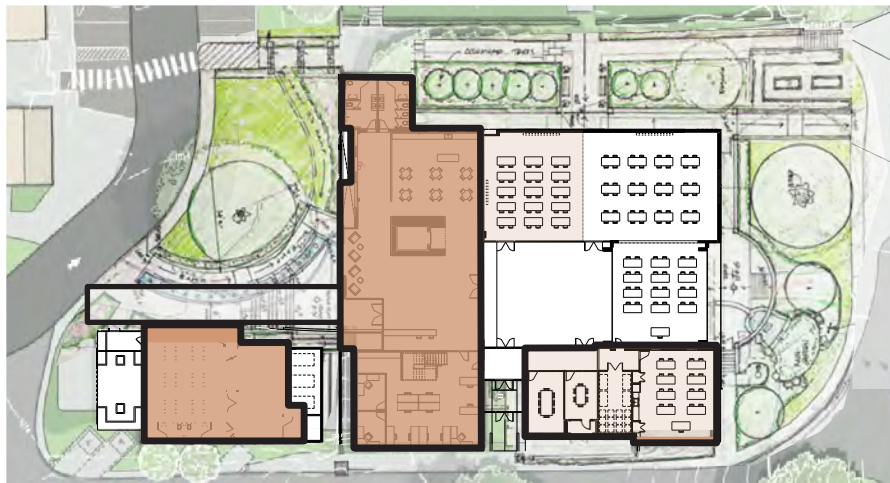


IN A WAY THAT...

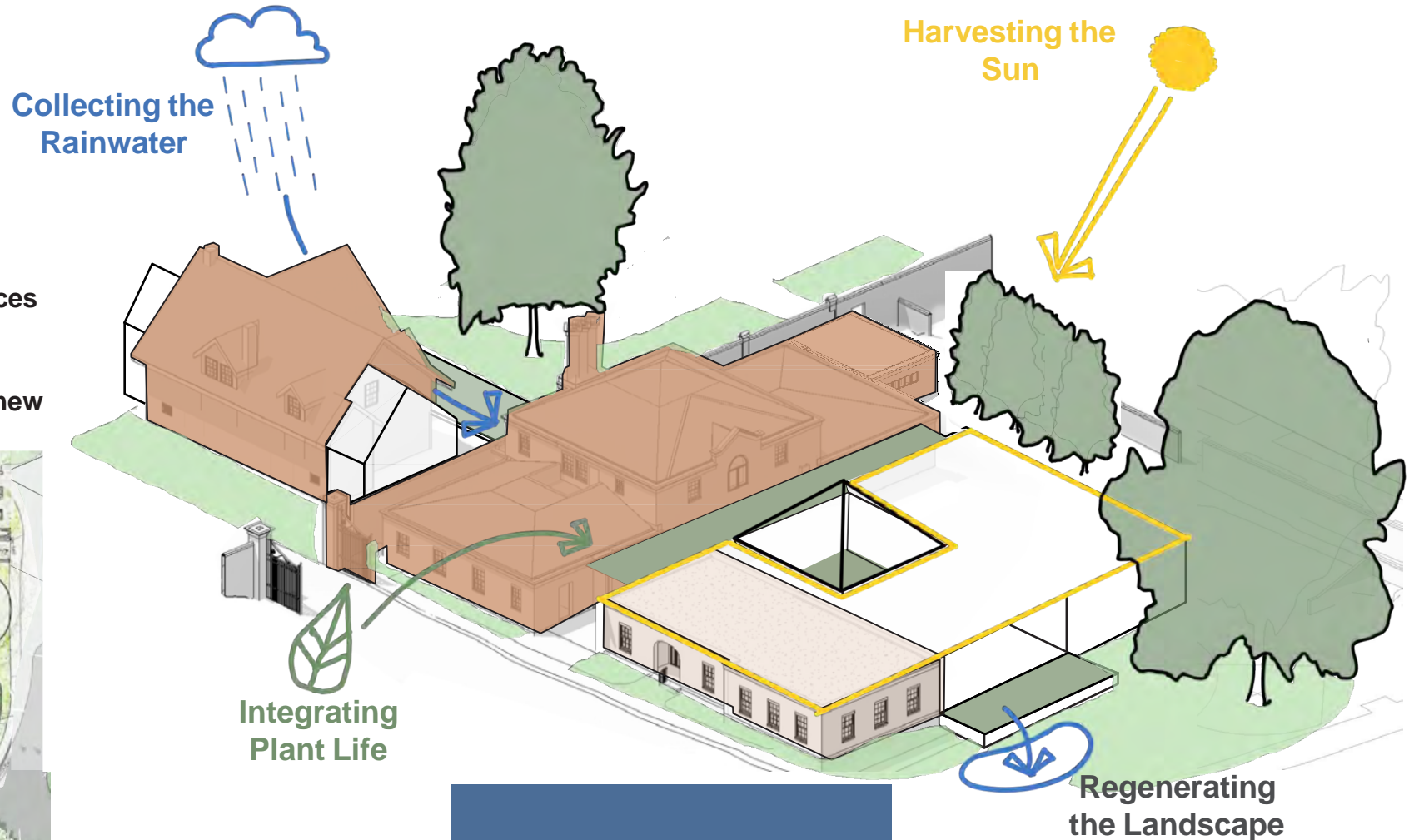
- Realizes our regenerative capacity
- Connects people with nature
- Serves as the fabric that connects it all!

AND ACCOMPLISHES GOALS THAT....

- Stay within the bounds of the existing site
- Create a new welcoming presence all around
- Improves the Botanical Arts education program spaces
- Supports the vision for park improvements
- Provides distinction between the historical and the new



Scale 1/64" = 1'-0"
0' 16' 32' 64' 128'
06-29-23 © Rothschild Doyno Collaborative



New classrooms

SUSTAINABLE DESIGN GOALS

Establishing goals that support healthy and sustainable community environments



We will be pursuing the highest level of these building and human environmental health certifications.



*International WELL Building Institute
WELL Building Standard*



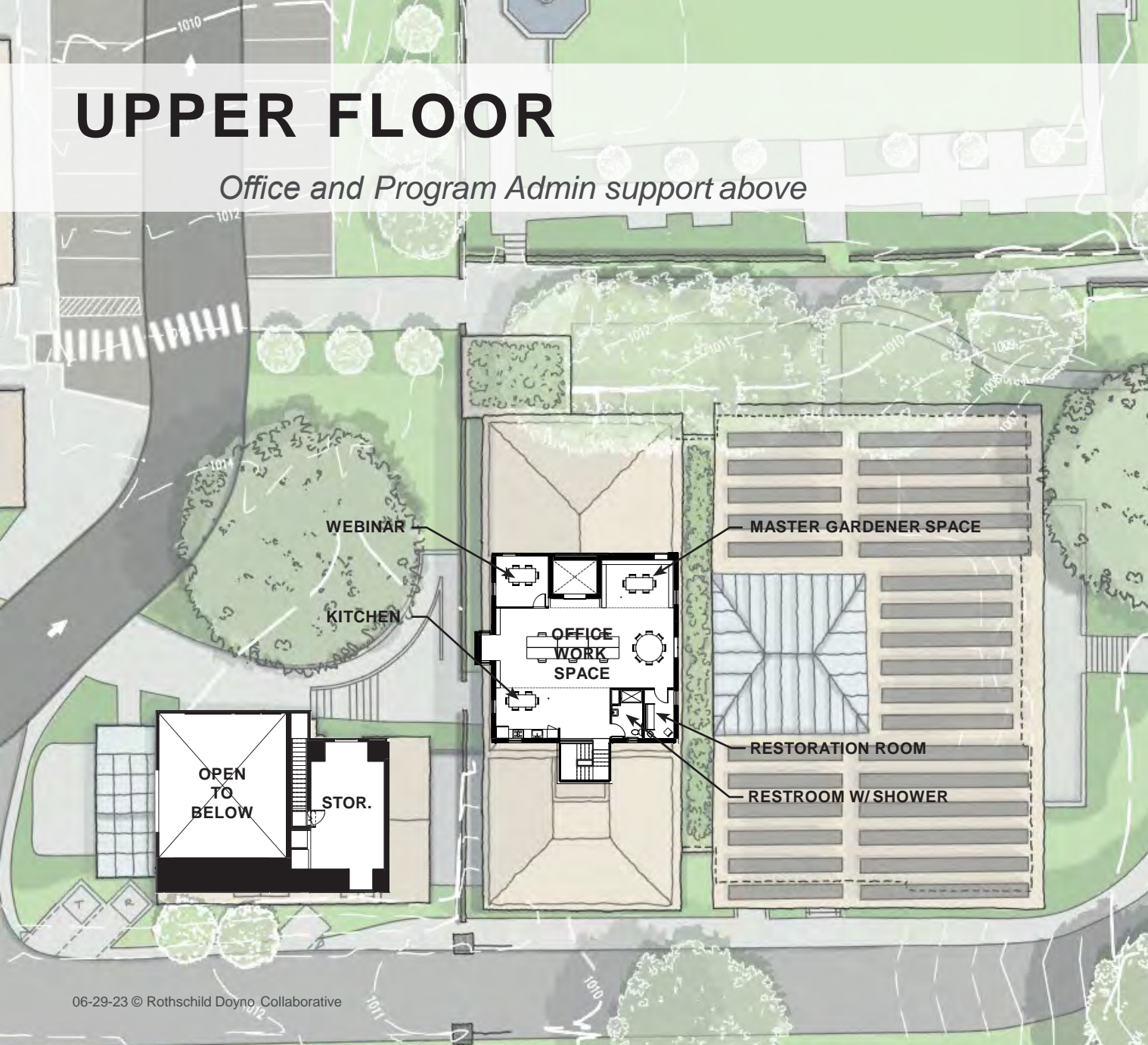
*US Green Building Council
LEED v4 for BD+C*



*International Living Future Institute
CORE Green Building Certification*

UPPER FLOOR

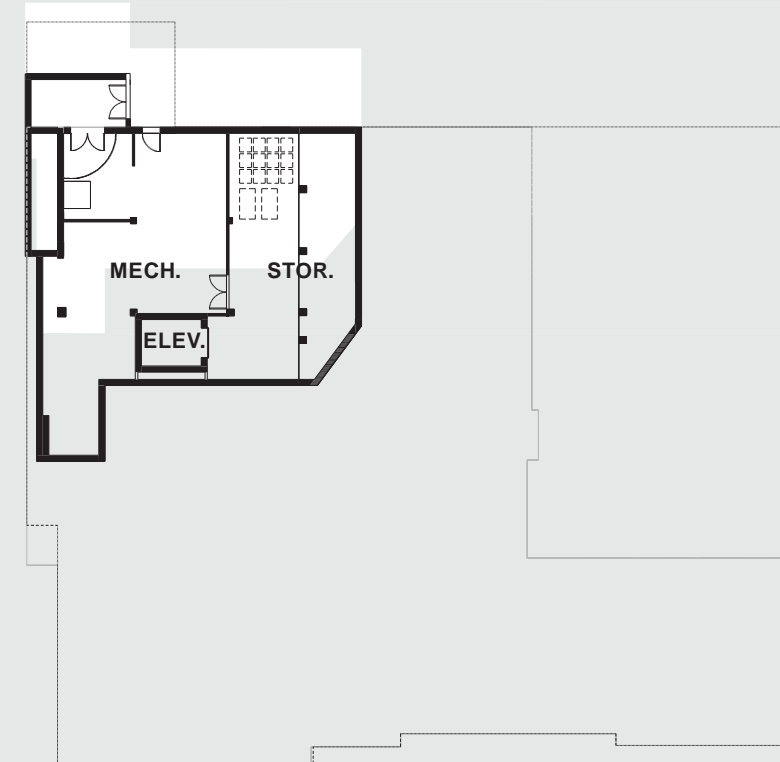
Office and Program Admin support above



06-29-23 © Rothschild Doyno Collaborative

BASEMENT

Storage and mechanical below



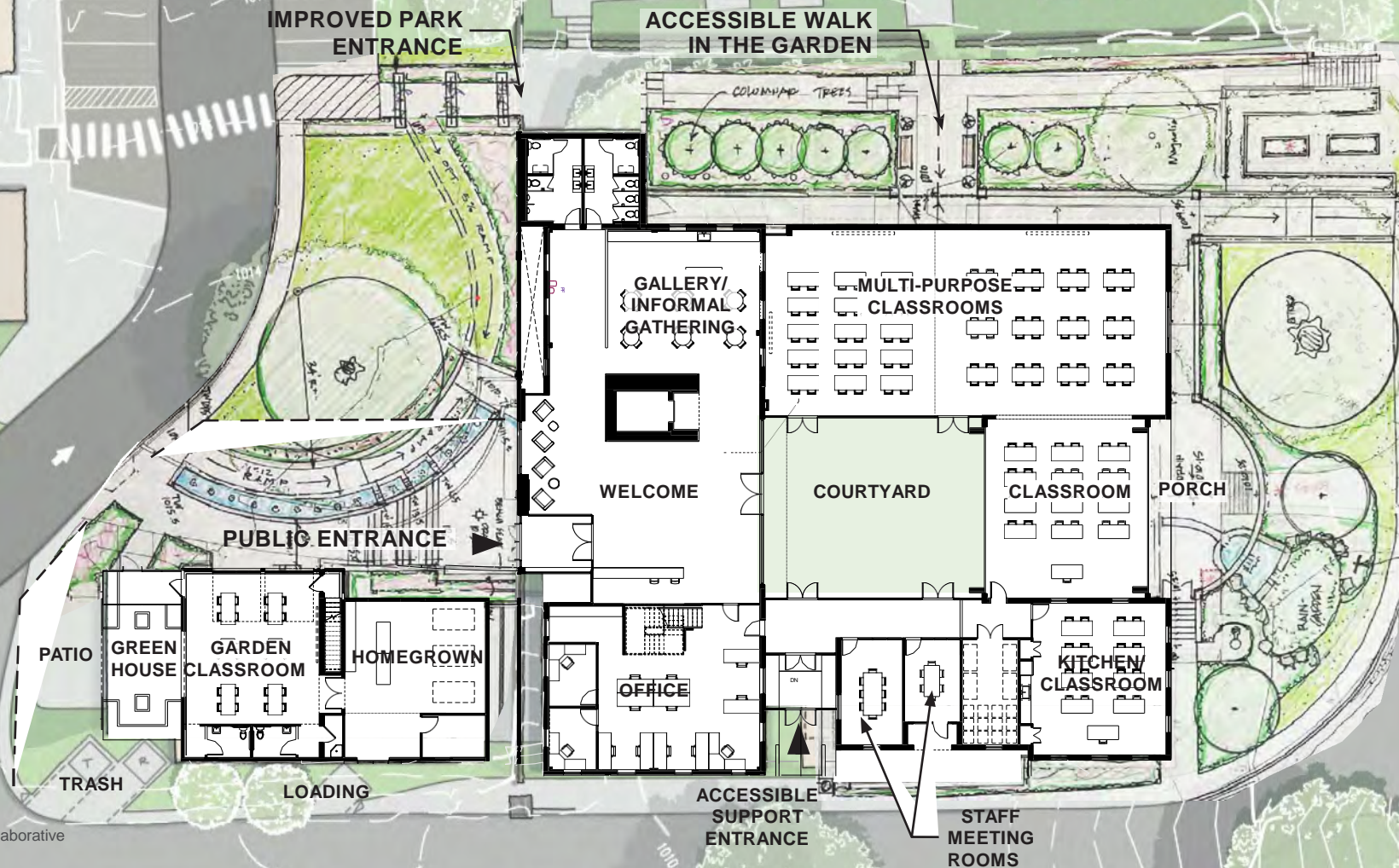
Scale 1/32" = 1'-0"
0' 8' 16' 32' 64' 

The existing upper floor will have a staff kitchen and work areas. The basement will hold mechanical equipment and storage. By using a geothermal system, we will be able to eliminate the loud HVAC systems that sit on the current roof of the building.

SUPPORTING EDUCATIONAL & GARDENING SPACES



All educational spaces are on the park ground level



GOALS:

- IMPROVED EDUCATIONAL SPACES
- HEALTHY INTERIOR ENVIRONMENTS
- ALIGNED WITH PHIPPS SUSTAINABLE DESIGN GOALS
- SUPPORT EVENTS IN THE PARK
- IMPROVED CONDITIONS ALL THE WAY AROUND THE EXTERIOR

06-29-23 © Rothschild Doyno Collaborative

In the Garden Center, the first floor will include 3 classrooms, the courtyard garden, a welcome and gallery area, a kitchen area for staging and for use by garden clubs. The first floor will also include office space and restrooms. The Scaife Garage will become the primary site for our Homegrown program with an associated classroom and greenhouse space.